

FRIENDS OF MINERALOGY

Pennsylvania Chapter

NEWSLETTER

VOL. 43 No. 4

WINTER 2015

Annual Symposium Recent Advances in Mineralogy: Pennsylvania and Universal Applications

The Friends of Mineralogy – Pennsylvania Chapter held our 2015 Symposium on November 7, with a field trip to the mine dumps of Cornwall, PA, on November 8. See the illustrated article on pages 2-5. The presentations were:

Stan Mertzman, PhD: Mineralogy of the Surface of Mars

Ron Sloto, PG: The Geology and Mineralogy of the Grace Mine

Michael Stefanic, PG: Phosphate Minerals in Pennsylvania

Bill Stephens, PG: Preliminary Evaluation of the Mount Pleasant Mills Wavellite Occurrence

Ian Saginor, PhD: Volcanic Evolution of Central America

Board Members and Officers Elected at Symposium

During the Symposium, FM-PA Chapter held a brief Annual Meeting of the Membership, including electing the following candidates for three-year terms on the Board of Directors:

Bill Kochanov,	Dianne Soccio,
Ron Sloto,	Bill Stephens.

Following the close of the symposium on Saturday afternoon, the Board of Directors met to elect the four officers for the coming year from within the Board, as prescribed in the Bylaws. They are:

President	Joe Marchesani
Vice President	Dianne Soccio
Treasurer	Ron Sloto
Secretary	David Glick

Officers, Board members and committee chairs are always shown on the final page of this newsletter.

National Friends of Mineralogy Elections

Those receiving this Newsletter in print will find enclosed pages 4 (Nominated Candidates) and 5 (Ballot) for national Friends of Mineralogy Board of Directors, from the national Newsletter, January, 2016. Instructions for voting and mailing are on page 5; ballots must be received before February 13.

For those receiving this newsletter via e-mail, the entire January national Newsletter will also be sent, and the ballot can be found on page 5.

See pages 10-11 of this issue for the Midwest Chapter's Symposium, Midwest Fluorites, to be held March 12 at Miami University, Oxford, Ohio.

Pennsylvania Geology Magazine

The Pennsylvania Geological Survey's magazine, Pennsylvania Geology, can be found on their web site; volume 45 number 3 is now available. In the editorial, Dr. Gale C. Blackmer introduces herself as the new State Geologist, the first woman in that position. The issue includes articles on Conodoguinet Cave, in Carlisle, and the 2015 Field Conference of Pennsylvania Geologists, which met in the anthracite coal region. Among the new Survey publications announced are the second edition of Educational Series 11, Sinkholes in Pennsylvania, by William E. Kochanov. This and most other Survey publications are available for download from <http://www.dcnr.state.pa.us/topogeo/publications/>

It has been some time since this Newsletter covered Pennsylvania Geology magazine. One article of mineralogical interest was in the Winter 2014 issue (vol. 44, no. 4): Mineralogy at the Pennsylvania Geological Survey - 1973 Versus Now, by John H. Barnes and Robert C. Smith, II.

In Memoriam: Martin L. Anné

Reminiscences and information on FM-Pa Life Member Martin Anné, who died on September 19th, are still invited for a memorial article. Please mail or e-mail them to the Editor (see p. 8); all materials will be returned if requested.

- Editor

2016 Symposium Provides Five Presentations and Plenty of Activities



Joe Marchesani, Friends of Mineralogy - Pennsylvania Chapter President, and Dr. Stan Mertzman, our host at Franklin & Marshall College, prepare to open the Symposium.



Ron Sloto spoke on The Grace Mine, New Morgan Borough, Berks County, Pennsylvania.

Dr. Stan Mertzman spoke on Mineralogy of the Surface of Mars.



Michael Stefanic's presentation addressed Phosphate Minerals in Pennsylvania, including some historic collecting localities.



The Adams Auditorium provides a comfortable venue for our Symposium.



Bill Stephens addressed a currently popular phosphate collecting site in his talk on Preliminary Evaluation of the Mount Pleasant Mills Wavellite Occurrence, National Limestone Quarry, Mount Pleasant Mills, Snyder County, Pennsylvania.



The presentation by Dr. Ian Saginor, second from left, on Evolution of Volcanism in Central America, was supported by 3D printed models of volcanos, which were later examined by the audience.



The silent auction of donated specimens and publications was successful in raising funds and providing "food for thought" and conversation.



The Friends of Mineralogy – Pennsylvania Chapter held its 2015 Symposium on November 7, with a field trip on November 8. The symposium theme was **Recent Advances in Mineralogy: Pennsylvania and Universal Applications.** The attendance was up slightly from recent years, with fifty people taking part. Professional Geologists were able to receive Professional Development Hours for lecture attendance.

The Chapter is grateful for the use of Adams Auditorium in Kaufman Hall for lectures, and the teaching lab for silent auction and social activities, as arranged by Dr. Stan Mertzman.

Symposium Field Trip Visits New Sites at Cornwall



Bob Benson photo



Bob Benson photo



Spray of pink stilbite crystals from the golf course dumps.
Mike Dunton specimen & photo.

The symposium field trip took place Sunday at the mine dumps of Cornwall, Pennsylvania. Among the sites available for collecting were two on the property of the Iron Valley Golf Club, which had not been visited by this group before. Permission for field trip attendees to collect on the golf course property was greatly appreciated.

This was a joint trip with Delaware Mineralogical Society (DMS). DMS member Bob Benson reports identifying the following minerals collected from the tailings piles: hematite, diopside, epidote, chlorite, chalcopryite, brochantite, chalcantinite, calcite, pyrite, azurite, malachite, actinolite (?), and mottramite (?). The last two are less certain, but came from the best effort to key them out from mineral guide books.



Photo courtesy of Kim & Sarko Yepremian



Photo courtesy of Kim & Sarko Yepremian

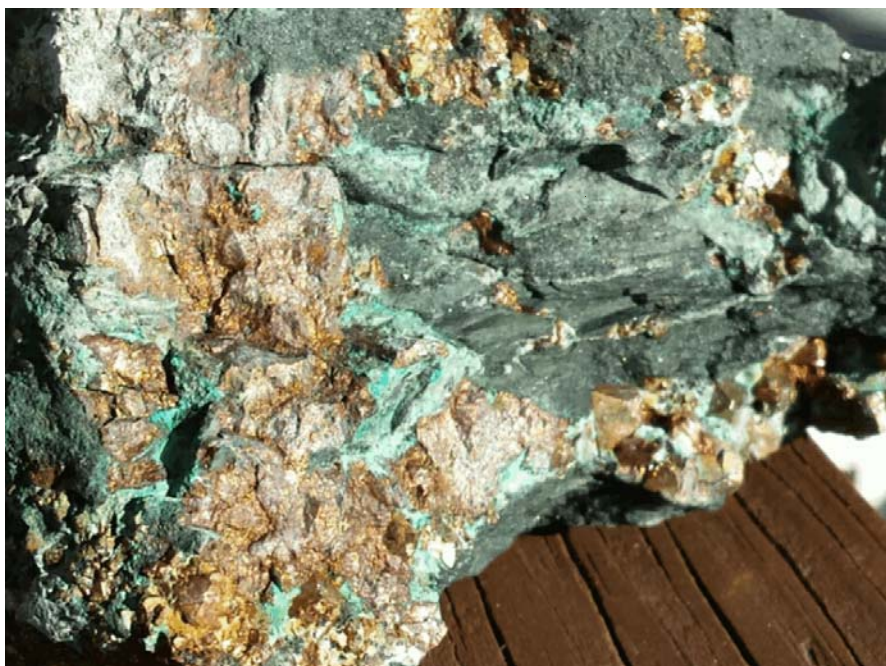


Photo courtesy of Kim & Sarko Yepremian



Photo courtesy of Kim & Sarko Yepremian



Photo courtesy of Kim & Sarko Yepremian



Photo courtesy of Kim & Sarko Yepremian

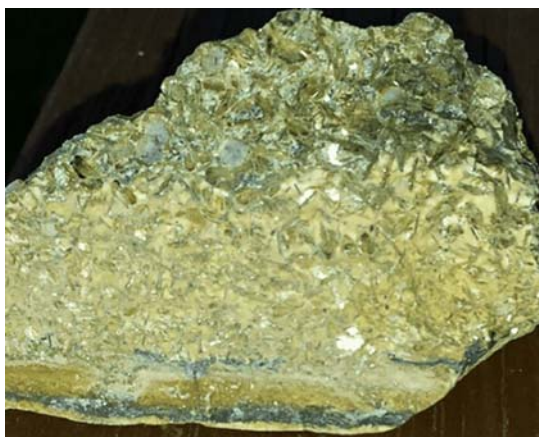


Photo courtesy of Kim & Sarko Yepremian

A LOOK BACK AT THE FIRST FRIENDS OF MINERALOGY PENNSYLVANIA CHAPTER SYMPOSIUM

by Ron Sloto

The first Friends of Mineralogy Pennsylvania Chapter Symposium was held on November 2-4, 1973, at Lafayette College in Easton. The three-day symposium featured a social hour and Pennsylvania mineral swap on Friday night, presentations on Saturday, and a field trip on Sunday. The photographs were taken by Martin Anné.

On Saturday, presentations were made by Dr. Raymond Grant (Lafayette College), Dr. Arthur Montgomery (Lafayette College), Delbert Oswald (Carnegie Museum of Natural History), Dr. Donald Hoff (William Penn Museum), Dr. Robert Smith II (Pennsylvania Geological Survey), Milton Leet (Bethlehem Steel Corporation), Dr. Alice Weeks (Temple University), Dr. Deane Smith (Pennsylvania State University), and Dr. John Way (Pennsylvania Geological Survey). Dinner in the Lafayette College cafeteria was followed by discussion and more swapping.

PROGRAM

Friday, November 2, 1973

7:00 PM to 8:30 PM Registration

8:30 Pennsylvania Geology for Mineral Collectors
Dr. Raymond Grant, Department of Geology, Lafayette College

9:30 Social Hour (Refreshments)

TABLES AVAILABLE FOR SWAPPING PENNSYLVANIA MINERALS

Saturday, November 3, 1973.

8:00 AM to 4:00 PM Facilities available for the identification
of Pennsylvania Minerals (microscopes and x-ray equipment)

8:00AM to 9:00 AM Registration for those arriving Saturday

PENNSYLVANIA MINERAL COLLECTIONS

9:00 AM The Philadelphia Academy of Natural Sciences
Collection and Sam Gordon
Dr. Arthur Montgomery, Department of Geology,
Lafayette College

9:30 The Jefferis' Collection, Carnegie Institute, Pittsburg
Delbert Oswald, Associate Curator of Mineralogy,
Carnegie Institute

10:00 The William Penn Memorial Museum Collection
Dr. Donald Hoff, Curator of Minerals
William Penn Museum

10:30 Coffee Break (Refreshments)

Thank you to Steve Carter for donating
Marty's photos to the FM-PA archives.



Fig. 1 Approximately 125 interested in collecting and conserving Pennsylvania minerals attended the first symposium. A, John Way; B, Bobbi Way; C, Bob Smith; D, John Barnes.

PENNSYLVANIA MINERAL LOCALITIES (REGIONAL)

11:00 Pb-Zn occurrences in Pennsylvania
Dr. Robert Smith, Pennsylvania Geological Survey

11:15 Minerals of the Cornwall type iron deposits Milton Leet,
Bethlehem Steel Corporation

11:30 Uranium occurrences in Pennsylvania
Dr. Alice Weeks, Department of Geology, Temple University

12:00 Lunch (available in school cafeteria)

PENNSYLVANIA MINERALS

1:30 Characterization problems in defining a new mineral
Dr. Deane Smith, Department of Geosciences
Pennsylvania State University

2:15 Wurtzite
Delbert Oswald, Curator of Mineralogy, Carnegie Museum

2:45 Definition of a mineral and the minerals associated with
the burning coal mines
Dr. Davis Lapham, Pennsylvania Geological Survey

3:15 Coffee Break (Refreshments)

3:45 to 5:30 Pennsylvania Mineral Clubs

A discussion of the role of Pennsylvania Mineral Clubs
and Friends of Mineralogy. Each club which desires
will be given time to make their feelings known.

5:30 Dinner (available in school cafeteria)

7:30 to ? Mineral Swap, Informal Discussion, Social Time

Sunday, November 4

Possible field trips - Williams Quarry, Friedensville,
Hellertown Phosphates - as requested by attendees.



Fig. 2 Dr. Raymond Grant spoke on Pennsylvania geology for mineral collectors.

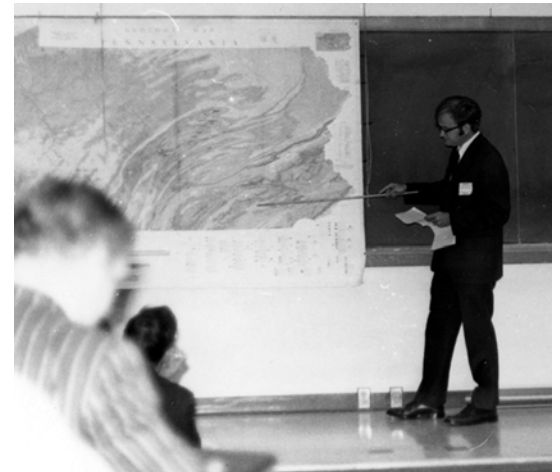


Fig. 4 Dr. Robert Smith II spoke on lead and zinc occurrences in Pennsylvania.

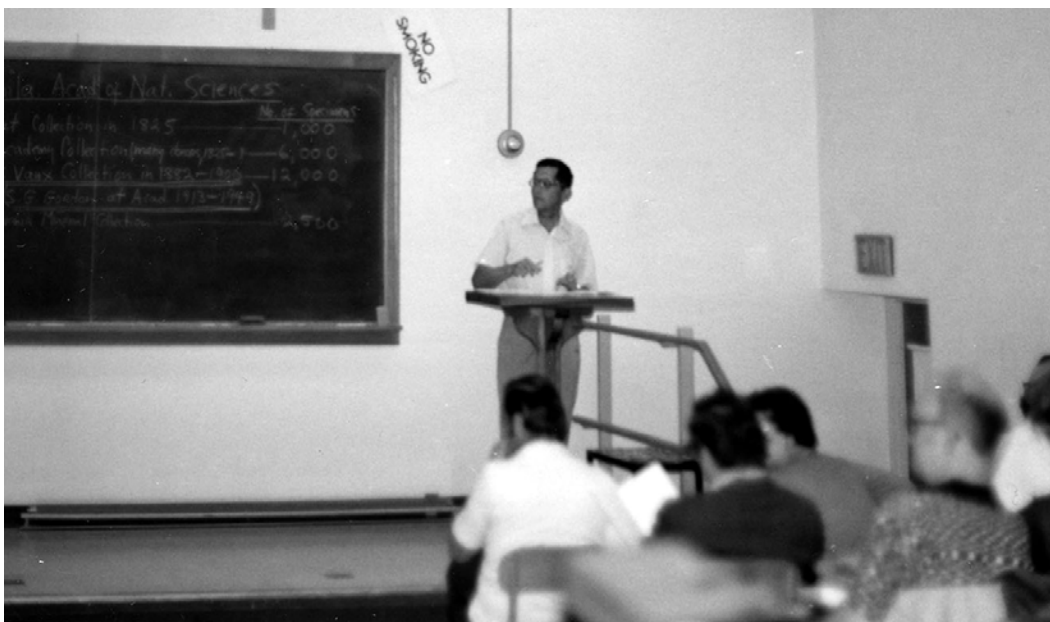


Fig. 3 Dr. Authur Montgomery spoke on the Philadelphia Academy of Natural Sciences collection and Sam Gordon.



Fig. 5 Delbert Oswald spoke on the Jefferis collection at the Carnegie Museum of Natural History.



Fig. 8 The mineral swap. A, Marge Matula; B, Martin Anné; C, Don Schmerling; D, Gloria Smith.



Fig. 6 Dr. John Way spoke on the definition of a mineral and minerals associated with burning coal mines.



Fig. 9 The mineral swap. Vince Matula is in the center; Bryon Bookmeyer is on the right side of photo.

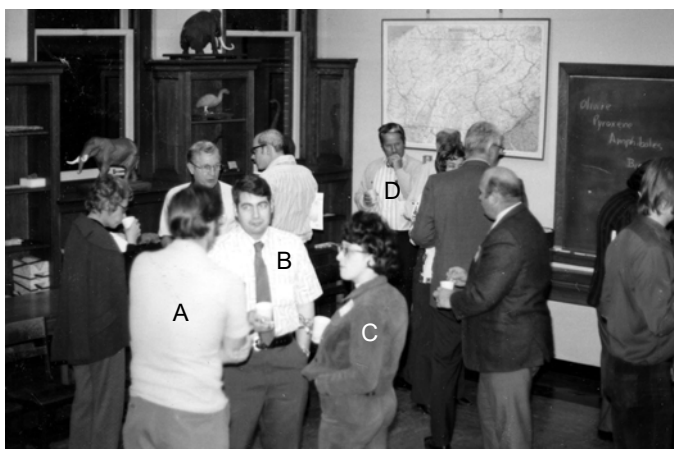


Fig. 7 The social hour sparked many discussions on Pennsylvania minerals. A, Martin Anné; B, John Way; C, Bobbi Way; D, Bill Heacock?

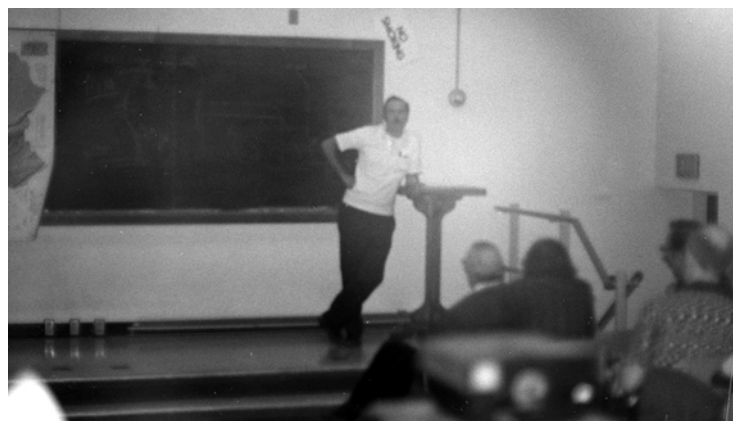
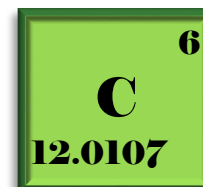


Fig. 10 Martin Anné, first Director of Friends of Mineralogy, Region 3.

Carbon Mineral Challenge: A Worldwide Hunt for New Carbon Minerals

The Carbon Mineral Challenge sets the stage for both professional and amateur mineral collectors to make their mark by discovering never-before described minerals. Researchers predict at least 145 of Earth's carbon-bearing minerals remain undiscovered. How many can collectors find by 2019?



The Carbon Mineral Challenge is the brainchild of Robert Hazen, Robert Downs, Daniel Hummer, and colleagues, and is conducted in collaboration with the Deep Carbon Observatory. Hazen and colleague's new paper, "Carbon mineral ecology: Predicting the undiscovered minerals of carbon", is currently in press at the *American Mineralogist*. However, you can obtain a pre-publication print copy by going to this link: http://www.minsocam.org/msa/ammin/AM_Preprints/5546HazenPreprintApr.pdf

An exceptional 1 minute and 35 second explanation about the Carbon Challenge can be seen at: <http://mineralchallenge.net>

The Deep Carbon Observatory Science Network points out the unparalleled role carbon plays in our lives: as the element of life, as the basis of most of our energy, as the backbone of most new materials, and as the central focus in efforts to understand the Earth's variable and uncertain climate. Yet in spite of carbon's importance, scientists remain largely ignorant of the physical, chemical, and biological behavior of many of Earth's carbon-bearing systems.

The subject of carbon was also featured in a 700-page special issue of *Reviews in Mineralogy and Geochemistry* called Carbon in Earth, Volume 75, which comprises 20 chapters by more than 50 researchers in nine countries. The book-sized volume of the journal integrates a vast body of research in physics, chemistry, and biology and the Earth and space sciences. The volume is Open Access -- free to all readers due to the generous funding from the Sloan Foundation and Deep Carbon Observatory, and can be found at: <http://rimg.geoscienceworld.org/content/75/1/iii.1/suppl/DC1>

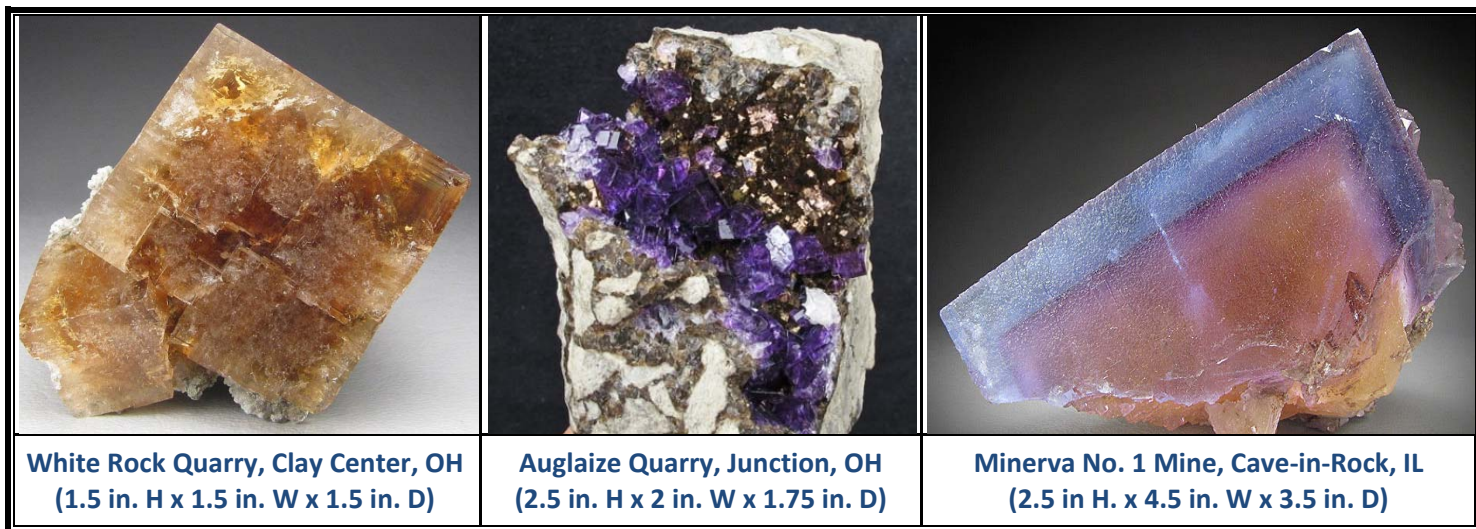


Aragonite coated snake skeleton, Santa Juliana Mine, East Camp, Santa Eulalia District, Chihuahua, Mexico. 9 cm, Peter Megaw specimen, Jeff Scovil photograph

FRIENDS OF MINERALOGY MIDWEST CHAPTER
4th ANNUAL MINERALOGICAL SYMPOSIUM
(SPONSORED BY THE KARL E. LIMPER GEOLOGY MUSEUM)



MIDWEST FLUORITES



DATE: Saturday March 12, 2016

TIME: 9:30 AM – 6:30 PM

LOCATION: Shideler Hall, Miami University, Oxford, Ohio

CONTACT: Randy Marsh, VP Programs, FM Midwest Chapter (marsh.rg@pg.com or 513-515-7890)

DETAILED AGENDA:

- | | |
|-------------|---|
| 9:30-10:00 | FM Midwest Chapter Meeting (open to all) |
| 10:00-11:00 | <i>Fluorite</i> – Arvid Pasto |
| 11:00-12:00 | <i>Midwest Fluorite</i> – Jeff Scovil |
| 12:00-1:00 | Lunch Break and Viewing Time for Specimens |
| 1:00-1:30 | <i>Fluorite in Mississippi Valley Type Deposits</i> – John Rakovan |
| 1:30-2:00 | <i>The Significance of Ultramafic Rocks Underlying the Illinois-Kentucky Fluorspar District</i> – Brett Denny |
| 2:00-2:30 | <i>Investigating the Nature of the Primary Ore Forming Fluids in the Illinois-Kentucky District</i> – Stuart Kenderes |
| 2:30-2:45 | Break |
| 2:45-3:15 | <i>Findlay Arch Fluorites</i> – John Medici |
| 3:15-3:45 | <i>The Many Faces of Midwest Fluorites</i> – Nelson Shaffer |
| 3:45-4:15 | <i>Crystallography of Fluorite</i> – Pete Richards |
| 4:15-4:30 | Break |
| 4:30-5:00 | <i>Fluorite Deposits of Kentucky</i> – Alan Goldstein |
| 5:00-5:30 | <i>Selecting Fluorite Specimens & Building a Fluorite Collection: A Mineral Collector's Perspective</i> – Jim Gebel |
| 5:30-6:30 | Tour of Facility and Viewing Time for Specimens |

DIRECTIONS and PARKING: The Limper Geology Museum is located on the Miami University campus just inside the East and West entrances to Shideler Hall on the first floor. Shideler Hall is located west of the intersection of US Highway 27 and State Route 73. Parking on Saturday is free in the lot across from Shideler Hall (Cook Field Parking Lot on corner of 27 and 73). See map below.



UPCOMING EVENTS

January 23, 2016: 2nd Annual Philadelphia Interclub Mineral and Fossil Swap and Sell. Cathedral Village, 600 E. Cathedral Rd., Philadelphia PA 19128. Sat. only, 9:00-1:00. Contact John Rateike, 215-576-0741

March 5-6 2016: *Where in the World?*, 53rd Annual Gem, Mineral & Fossil Show, by Delaware Mineralogical Society, Del. Tech. & Comm. Coll., 400 Stanton-Christiana Rd., Newark, DE. Sat. 10-6, Sun. 11-5.

<http://delminisociety.net/marchshow/marchshow.htm>

March 12, 2016: 40th Annual Micromount Show, sponsored this year by Leidy Microscopical Society. Northminster Presbyterian Church, 140 Trenton Rd., Fairless Hills PA 9a.m. - 3 p.m.

March 19-20, 2016: Gem, Mineral & Jewelry Show, by Franklin County R&M Club. Hamilton Heights Elem. School, 1589 Johnson Rd., Chambersburg PA

April 2-3, 2016: Philadelphia Mineral Treasures & Fossil Fair, by Phila. Min. Soc. & Del. Valley Paleo. Soc. Lulu Temple, 5140 Butler Pike, Philadelphia PA

April 16-17, 2016: North Rocks! North Museum Gem, Mineral, Fossil & Jewelry Show. Farm & Home Center, 1383 Arcadia Rd., Lancaster PA. Sat. 10-5, Sun. 10-4.

<http://www.northmuseum.org/events/>

May 14-15, 2016: World of Gems & Minerals Show, by Berks Mineral. Soc. Leesport Farmers Market, Rt 61, Leesport.

May 21, 2016: The Earth Science Show & Sale, by Rock & Mineral Club of Lower Bucks County. First United Methodist Church, 840 Trenton Road, Fairless Hills, PA, 9a.m. - 4 p.m.

June 4, 2016: Spring Mineralfest, by Penna. Earth Sciences Assoc., Memorial Park, Poplar St., Macungie, PA Sat. only, 8:30 - 3:00. <http://www.mineralfest.com/>

DONATIONS WELCOMED

The FM-PA Chapter is a 501(c)(3) nonprofit organization; donations are gratefully accepted and may be deducted from your federal income tax. Donations of any size help to offset the general operating costs of the Society, helping to keep dues low.

From the Editor

David Glick

THANK YOU to everyone who has been providing material for the Newsletter! Everyone else - join the fun! **Please provide materials for the next issue by March 5, 2016.** Feel free to contact me at xidg@verizon.net, or 814-237-1094 days and evenings. **Mail can be sent to** 209 Spring Lea Dr., State College PA 16801.

Materials related to Pennsylvania mineralogy, collecting or collectors are invited for this newsletter: articles, long or short; announcements from FM-PA committees; photographs of specimens, field localities, collections, etc.; reports on publications about PA minerals or by PA authors, or actual book reviews; or other items within the mineralogy and mineral collecting areas of interest. Photographs should be of good resolution (1000 pixels across) without much JPEG compression, so that they will look good in print. Please provide captions including photographers' names.

We are producing four issues each year; **your material is needed** to make them worthwhile!. If you know people who have interesting material, please encourage them to submit it.

FM on the WWW

Please explore the FM-PA web site at
www.rasloto.com/FM/

National News

National FM newsletters, links to other chapters, and much more can be found on their web site:
www.friendsofmineralogy.org

Friends of Mineralogy Pennsylvania Chapter Directory of Officers

OFFICERS and BOARD OF DIRECTORS members

President	Joe Marchesani	Jmarch06@comcast.net	(609) 433-5129
Vice President	Dianne Soccio	dianne.soccio@gmail.com	(302) 388-6720
Treasurer	Ron Sloto	rasloto@aol.com	(610) 469-0626
Secretary	David Glick	xidg@verizon.net	(814) 237-1094

COMMITTEE CHAIRS

Membership Chair	Ron Sloto	rasloto@aol.com	(610) 469-0626
Symposium Chair			
Field Trip Chair			
Web Manager	Ron Sloto	rasloto@aol.com	(610) 469-0626
Newsletter Editor	David Glick	xidg@verizon.net	(814) 237-1094
Grants Chairman	David Saja	geo.rx.david@gmail.com	(216) 231-4600 x3229

Curator, Cleveland Museum of Natural History

BOARD OF DIRECTORS

William Kochanov	wkochanov@pa.gov	(717) 702-2033 M—F, 8-4
Bill Stephens	bstephens@stephensenv.com	(302) 286-0406

Friends of Mineralogy Pennsylvania Chapter Web Site: <http://www.rasloto.com/FM>