

# FRIENDS OF MINERALOGY

## Pennsylvania Chapter

# NEWSLETTER

VOL. 41 No. 2

SUMMER 2013

### President's Message

The Board held its first meeting of 2013, on June 23, at my home with a cook-out! On what was a lovely summer's day, several issues had been discussed.



The first item on the agenda was a request from the Connecticut Museum of Mining and Mineral Science, in New Milford, Connecticut. Long-time PA Chapter member, John Pawloski, is now the director of the aforementioned organization, and is asking for a donation. This money would support a 1300 square foot addition to the CT Science Museum. Our Grant Fund is permitted to only donate to students doing research on Pennsylvania mineralogy. Since our General Fund does not have enough funds to consider even making a donation, we regret not being able to support their new addition. The Board voted the request down. However, if any member would be interested in making a personal donation, I've included the information in this Newsletter (below).

Another item on the agenda was the **Symposium**. The date has been finalized. It will be held on Saturday, November 2nd, and we will again hold it at Franklin and Marshall College. The Symposium's Field Trip will be on Sunday Nov 3rd. The Board spent the afternoon planning for the Symposium speakers, the particulars of the silent auction, and of course, the refreshments for this event. Again this year, we plan to host a few local dealers. I hope to have it all in place by the time the Fall

Newsletter hits the press. Please reserve the first weekend this November for the FM-PA Symposium.

Other housekeeping items were discussed. I reviewed the membership rolls with the Board. We have a total of 6 Life members and 64 members in good standing. Field Trips were also discussed. I am hoping to have one in September. Details will follow. Of course, one will be determined in conjunction with the Symposium in November.

I hope you all enjoy the Summer. Keep safe, and I'll see you on our next field trip!

*Arnold Mogel,*  
President, FM PA. Chapter

### The Connecticut Museum of Mining and Mineral Science

Donations (as noted in the President's Letter, above) can be sent to:

John Pawloski  
CT Museum of Mining and Mineral Science  
P.O. Box 1467  
New Milford, CT 06776

Checks should be made out to the Museum, not to John.

The Museum is an all-volunteer, 501(c)(3) nonprofit - all donations are tax deductible. John may be contacted at 860-927-0050 or by e-mail <j.a.pawloski@att.net> if you have any questions for him. The web site [http://www.ctamachinery.com/what-is-cama/connecticut\\_museum\\_of\\_minin/](http://www.ctamachinery.com/what-is-cama/connecticut_museum_of_minin/) provides an introduction, and the "click here for more" link at the bottom of that page leads to a longer article and links to a variety of photographs of the museum.



## New Publications

**Roadside Geology of New Jersey**, by David P. Harper, was published earlier in 2013 by Mountain Press Publishing Company. It is available as a paperback and has 360 pages.

Mountain Press also published *Roadside Geology of Georgia* by Pamela J.W. Gore and William Witherspoon earlier this year.

## Old Publications

### 110 Years Ago in The Mineral Collector

The June 1903 issue includes a report on the work of Dr. Albert Huntington Chester, curator of the mineral museum at Rutgers College, and author of *A Dictionary of the Names of Minerals* (New York, John Wiley & Sons, 1896), who died in April, 1903. The Dictionary can now be found on Google books <[books.google.com](http://books.google.com)>.

The July 1903 issue includes an article on *Blue Quartz of Bucks Co., Pa.*, by John F. Vanartsdalen. The author reported that blue quartz (often hair-like inclusions which appear to be graphite) can be found “almost anywhere in the clays and gravels or in the beds of streams south of the new red sandstone formation in Bucks or Montgomery counties.” The color may be “dark indigo” or “light blue.” In ten years of collecting, he only found it once in crystal form, near an unnamed railroad station.

Reports from the Philadelphia Mineralogical Club included collecting at the Girard Avenue tunnel; a new exposure between Mineral Hill and Black Horse; Valley Forge; Avondale; and Moore’s Station, NJ.

## The Mystery of the Montgomery County Cacoxenite

By Ronald A. Sloto

There are two cacoxenite specimens in the Theodore Rand collection (Rand 3305 and Rand 8536) in the Bryn Mawr College mineral collection. The locality given on the labels for these specimens is Colwell’s iron furnace, Conshohocken, Montgomery County. The problem is that Colwell’s iron furnace is an iron furnace, not a mine. The specimens probably were found in a pile of ore waiting to be smelted. Cacoxenite is not a common mineral in Pennsylvania, so where did these specimens originate?

Theodore Dehon Rand was born on September 16, 1837, in Philadelphia. He attended the Episcopal Academy in Philadelphia and the Philadelphia Polytechnical College, which was a technical school of high standing in its day. Science was Rand’s passion; however, law was his vocation. He practiced law in the office of Bullitt and Fairthorne, which became Fairthorne and Rand, and later Rand and Patton. He also served in the Union Army during the Civil War. He was elected a member of the Philadelphia Academy of Natural Science in September 1857. Rand died at his home in Radnor on April 24, 1903. His extensive mineral collection was bequeathed to Bryn Mawr College (Drown, 1903).

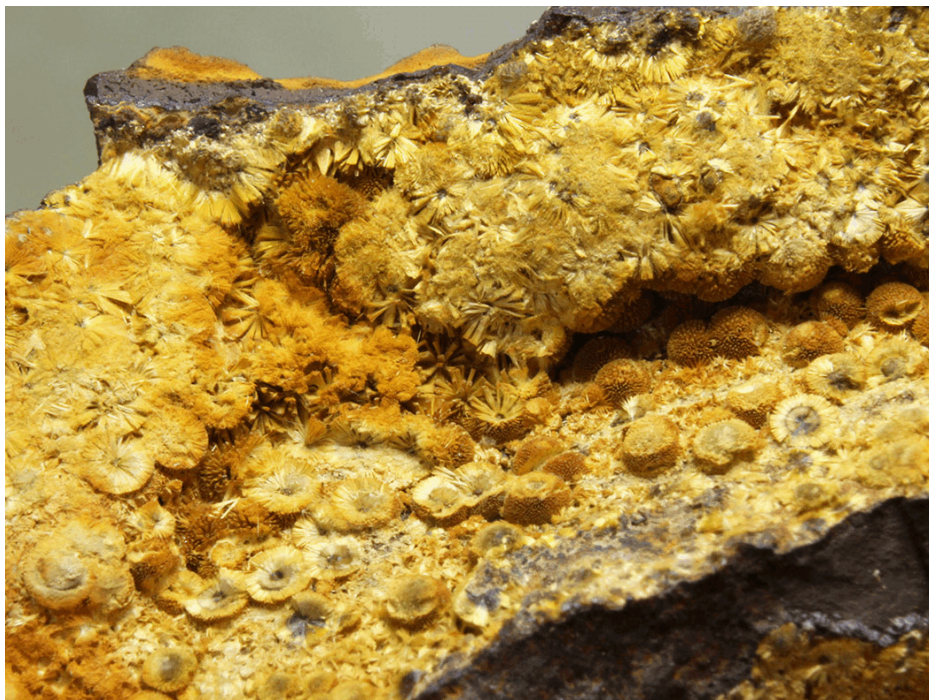
Rand wrote 34 papers on geology and mineralogy in a 32 year span, most of which were published in the *Proceedings of the Philadelphia Academy of Natural Science*. Rand discovered a uriferous mineral in a quarry in Philadelphia. The new mineral was named *randite* in his honor. It was later discredited as a mixture of kaolinite, tyuyamunite, and uranophane.

Rand described the discovery of the Montgomery County cacoxenite specimens. “*In 1855 at Colwell’s iron furnace on the northeast bank of the Schuylkill at Conshohocken, a few very fine specimens of cacoxenite were found. This came undoubtedly from the immediate vicinity but from what particular spot could not be ascertained, as ore was hauled to the furnace from many openings*” (Rand and others, 1892, p. 185). Colwell furnace was an anthracite iron furnace built in 1845. In 1863, the furnace was purchased by the Plymouth Iron Company and was thereafter known as the Plymouth



Furnace or Plymouth Iron Works. It went out of blast in 1889.

While visiting with Steve Carter and examining some of the minerals in his collection, we came across a fantastic specimen of cacoxenite. It had the same limonite matrix as the Rand specimens. Painted on the side of the specimen was the locality – Spring Mill. Spring Mill is located directly east of Conshohocken. The 1877 atlas (Hopkins, 1877) shows iron ore occurring at Spring Mill. There were probably numerous shallow iron pits in the vicinity. A review of Dana's mineralogy from the same time period during which the cacoxenite was found showed the entry "*at Spring Mills, cacoxene, lepidokrokite, spathic iron*" in the 1850 edition (Dana, 1850, p. 656). Spathic iron is iron carbonate or siderite.



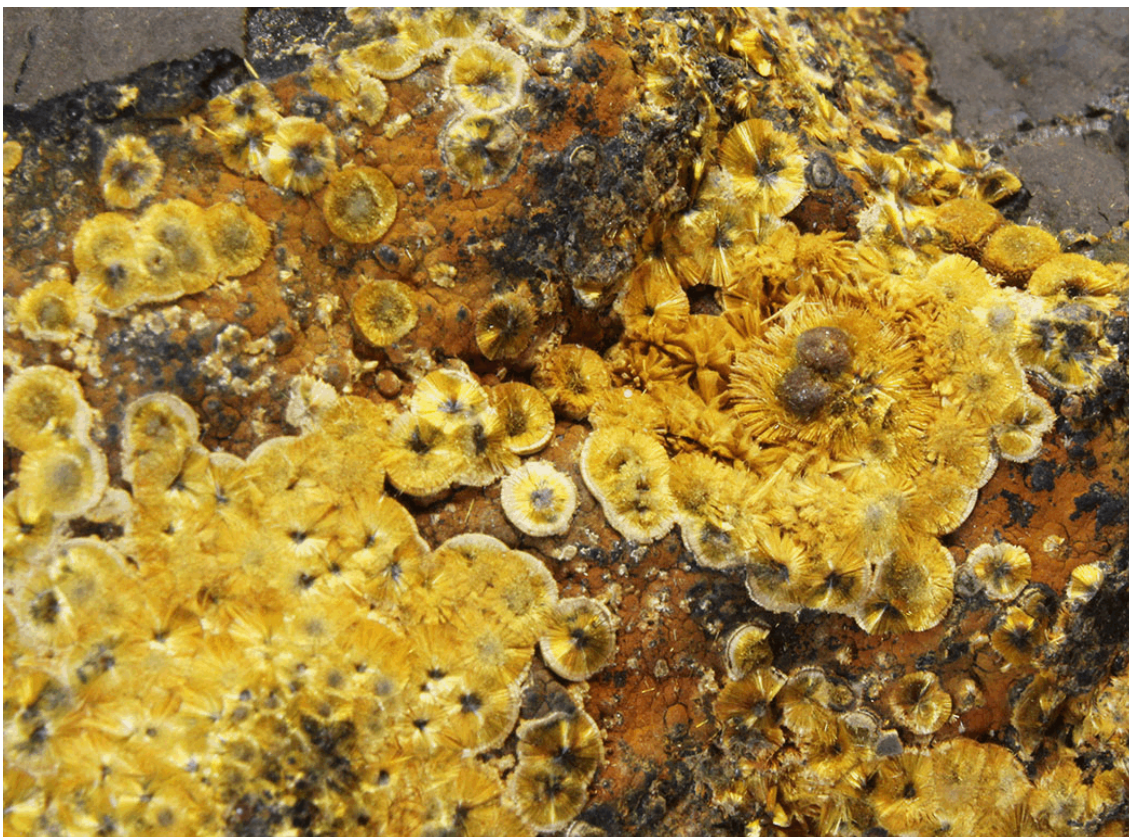
## REFERENCES

Dana, J.D., 1850, A system of mineralogy: Third edition, New York, 712 p.

Drown, T.M., 1904, Biographical notice of Theodore D. Rand: Transactions of the American Institute of Mining Engineers, vol. 34, p. 695-701.

Hopkins, C.M. 1877, Atlas of Philadelphia and environs: Bourquin Steam Lithograph Press, Philadelphia, 78 p.

Rand, T.D., Jefferis, W.W., and Cardenza, J.T.M., 1892, Mineral localities of Philadelphia and vicinity: Proceedings, Academy of Natural Science of Philadelphia, v. 44, p. 174-202.





**From the Editor**

David Glick

THANK YOU to everyone who has been providing material for the Newsletter! Everyone else - join the fun! **Please provide materials for the next issue by September 10, 2013.** Feel free to contact me at xidg@verizon.net, or 814-237-1094 days and evenings (especially Thurs-Sat., otherwise leave a message).

Materials related to Pennsylvania mineralogy, collecting or collectors are invited for this newsletter: articles, long or short; announcements from FM-PA committees; photographs of specimens, field localities, collections, etc.; reports about books or articles published about PA minerals or by PA authors, or actual book reviews; or other items within the mineralogy and mineral collecting areas of interest. Photographs should be of good resolution (1000 pixels across) without much JPEG compression, so that they will look good in print. Please provide captions including photographers' names.

We are producing four issues each year; **your material is needed** to make sure they have some substance. If you know people who have interesting material, please encourage them to submit it.

**DONATIONS WELCOMED**

The FM-PA Chapter is a 501(c)(3) nonprofit organization; donations are gratefully accepted and may be deducted from your federal income tax. Donations of any size help to offset the general operating costs of the Society, helping to keep dues low.

**UPCOMING EVENTS**

**July 20-21, 2013,** Gem & Mineral Show by Gem City Rock and Mineral Society. JNC Ice Arena, 423 West 8<sup>th</sup> St, Erie, PA <http://www.gemcityrockclub.org/show.htm>

**August 9-11, 2013:** East Coast Gem, Mineral & Fossil Show, Better Living Center at the Eastern States Exposition, 1305 Memorial Ave., West Springfield, MA 01089. [http://www.mzexplos.com/east\\_coast.html](http://www.mzexplos.com/east_coast.html)

**August 16-18, 2013:** Gem Miner's Jubilee, Lebanon Lebanon Expo & Fairgrounds, 80 Rocherty Rd, Lebanon PA 17042 <http://www.gem-show.com/>

**Sept. 14-15, 2013:** Central Pennsylvania Rock & Mineral Club annual show, Zembo Temple, 2802 N 3<sup>rd</sup> St., Harrisburg PA [http://www.rockandmineral.org/annual\\_show.htm](http://www.rockandmineral.org/annual_show.htm)

**Sept. 28-29, 2013:** Franklin-Sterling Hill Mineral, Gem, and Jewelry Show by Franklin-Ogdensburg Mineralogical Society and the Franklin Mineral Museum. Franklin Borough School, 50 Washington Avenue, Franklin NJ.

**Oct. 5, 2013:** Autumn Minerafest, by Penna. Earth Sciences Ass'n. Macungie Memorial Park, Poplar St., Macungie, PA.

**Oct. 26, 2013:** South Penn Fall Rock Swap, by Central PA & Franklin County R&M Clubs; South Mountain Fairgrounds, 1.5 miles West of Arendtsville, PA on Rte. 234.

**Oct. 26, 2013:** Ultravioletation All-Fluorescent Mineral show, by Rock and Mineral Club of Lower Bucks County. First United Methodist Church, 840 Trenton Rd, Fairless Hills PA.

**Nov. 2-3, 2013: Friends of Mineralogy - PA Chapter Symposium,** Franklin & Marshall College, Lancaster, PA.

**FM on the WWW**

Please explore the FM-PA web site at  
**[www.rasloto.com/FM/](http://www.rasloto.com/FM/)**

**National News**

National FM newsletters, links to other chapters, and much more can be found on their web site:  
**[www.friendsofmineralogy.org](http://www.friendsofmineralogy.org)**

**Friends of Mineralogy Pennsylvania Chapter Directory of Officers****OFFICERS and BOARD OF DIRECTORS members**

President	Arnold Mogel	Pioche@Verizon.net	(570) 739-4034
Vice President	Pen Ambler	bridger@atlanticbb.net	(814) 695-1726
Treasurer	Ron Sloto	rasloto@aol.com	
Secretary	James D. Stauffer	Jimimi82@Comcast.net	(717) 569-2982

**COMMITTEE CHAIRS**

Membership Chair	Cathy Mogel	FMPAmembership@verizon.net	(570) 739-4034
Symposium Chair			
Field Trip Chair			
Web Manager	Ron Sloto	rasloto@aol.com	
Newsletter Editor	David Glick	xidg@verizon.net	(814) 237-1094
Grants Chairman	David Saja	dsaja@cmnh.org	(216) 231-4600 x3229
	Curator, Cleveland Museum of Natural History		

**BOARD OF DIRECTORS**

George Rambo	Geo.Rambo@comcast.net	(302) 798-4163
David Glick	xidg@verizon.net	(814) 237-1094
Fred Stohl	flstohl@yahoo.com	(732) 341-3553

Friends of Mineralogy Pennsylvania Chapter Web Site: **<http://www.rasloto.com/FM>**